

Historic, archived document

Do not assume content reflects current scientific knowledge, policies, or practices.

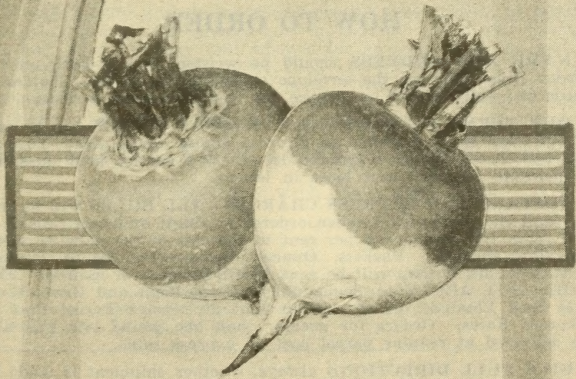
62.33

Bolgianos Catalog Fall 1932



LIBRARY
RECEIVED
★ SEP 21 1932 ★
U. S. Department of Agriculture.

Selected
Bulbs and
Vegetables



F.W. Bolgiano & Co.
"Capitol City Seeds"
Washington, D.C.

Remember! Fall, not
Spring, is the best time to
seed your lawn. Seed
from Aug. 1 to Oct. 10



BOLGIANO'S "CAPITOL PARK" LAWN GRASS SEED

contains a well-balanced blend of various American and foreign fine bladed and deeply rooting grasses which has proved to produce the very best results under the varied conditions as to soil and climate met with in America.

BOLGIANO'S "CAPITOL PARK" LAWN GRASS SEED will give a green, smooth, velvety sod with a thick bottom and free from such varieties of common grasses as produce clumps and knots on the lawn, which so frequently spoil the desired smooth and deep effect. Lb., 35c; 3 lbs., \$1.00; 5 lbs., \$1.50; 25 lbs., \$7.00.

BOLGIANO'S "SHADY NOOK" LAWN GRASS SEED

The Grass That Will Grow in Shady Places

It will quickly produce an abundant and even growth of beautiful green grass. The grasses used in making this special mixture are only those that are well adapted for growing in shade, and as it blends well with our Capitol Park Lawn Grass Seed it may be used on those portions of the lawn which are shaded by trees, buildings, etc., thus covering the whole area with a beautiful carpet of green. Lb., 40c; 5 lbs., \$1.75; 25 lbs., \$8.25.

BOLGIANO'S FAIR GREEN LAWN GRASS

Special Mixture with Creeping Bent

For a base there is still nothing superior to Kentucky Blue Grass, which remains evergreen all winter. Then there's a grass that resists the dry summer weather; one to grow quickly, giving an even sod in a short time; the old favorite white clover that most people want in abundance, and finally bent grass to give that dense undergrowth and velvety appearance so wanted by all. Lb., 50c; 5 lbs., \$2.25; 10 lbs., \$4.00.

Lōma The Lawn Tonic

It is quick acting. You can readily see on an established lawn a vast difference in ten days after applying

Loma. Greener, healthier, thicker, more velvety. Apply on a new lawn three days before you sow your seed, the grass will come up more quickly and thicker than you have ever seen before. Full directions on every package. Five lbs., 50c; 10 lbs., 85c; 25 lbs., \$1.75; 50 lbs., \$3.00; 100 lbs., \$5.00.

SINGLE HYACINTHS

Ready for Delivery Late in September



First Size, extra selected bulbs, 12c each, \$1.35 doz., \$10.00 per 100.

Second Size bulbs, 10c each, \$1.00 doz., \$8.00 per 100.

Single Pure White

L'INNOCENCE. The very best white. White as the driven snow. Extra fine truss with very large bells. A wonderful variety for bedding and forcing. Always produces good flowers.

Single Red, Rose and Pink

GERTRUDE. Deep carmine rose. A very large, well-filled truss of a fine color. Excellent for forcing and bedding.

LADY DERBY. Unusually large, thick, waxy bells of the loveliest shade of rose pink; spike ideal, strong, tall and well-filled.

LA VICTORIE. Brilliant carmine red; one of the very finest red varieties for bedding and forcing. It retains its superb color to the end.

QUEEN OF THE PINKS. Very bright rose-pink, of unusually clear tone; large spike with large bells.

Single Dark and Light Blue

GRAND MAITRE. Beautiful porcelain blue, gigantic truss filled with fine bells. Extra strong stem. One of the finest of the lighter blue hyacinths for all purposes.

KING OF THE BLUES. Deep, glossy blue, splendid well-formed large spike, on short stem. Bells of medium size but of great substance.

QUEEN OF THE BLUES. Pale azure-blue, with silvery appearance, large spike, splendid flower; an exhibition variety of great merit. Excellent for forcing and bedding.

Single Yellow

YELLOW HAMMER. Compact spike of a lovely creamy yellow. Excellent for pot culture.

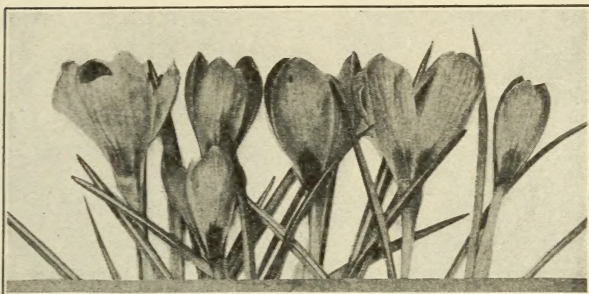
MIXED HYACINTHS

Single Bedding Varieties

White.....	}	Each	Doz.	100
Yellow.....				
Red.....				
Blue.....				
Pink.....				
		\$0.09	\$0.95	\$7.50

CROCUS

Ready for Delivery Late in September



The earliest of flowers to show its head among the grass almost before the snow is gone, this little gem has endeared itself to all those who look to nature for signs of returning spring.

Extra Large Size

	Each	Doz.	100
White.....	\$0.05	\$0.35	\$2.25
Blue.....	.05	.35	2.25
Striped.....	.05	.35	2.25
Yellow.....	.05	.40	2.50

FREESIA



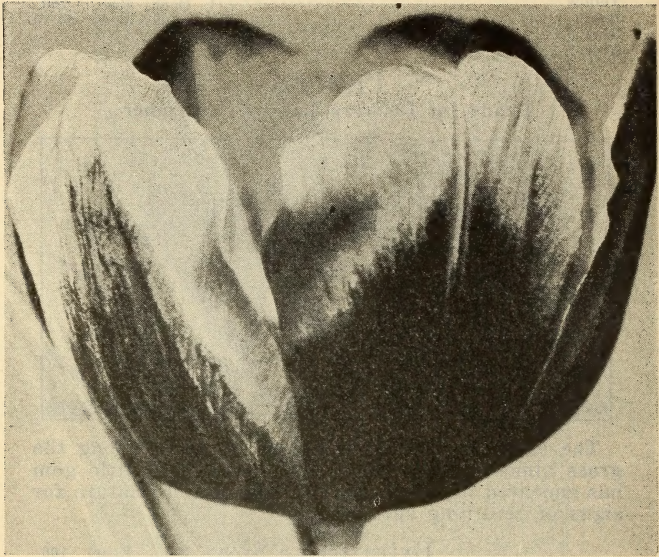
One of the most charming bulbs known for Winter-flowering and cut flowers. They grow well and bloom freely in an ordinary sitting room, if placed near a window and not kept too warm. They need not be kept in the dark as other bulbs. Plant 4 to 6 bulbs in a 5-inch pot, in light, rich soil.

IMPROVED PURITY. The finest and purest white variety yet introduced; of strong growth and very large flowers. 5c each, 50c doz., \$3.50 per 100.

RAINBOW MIXTURE. Clusters of yellow, blue, violet, mauve, pink and lavender, borne on graceful stems. 5c each, 55c doz., \$4.00 per 100.

SINGLE EARLY TULIPS

Ready for Delivery Late in September
6 Sold at the Dozen Rate, 25 at the 100 Rate



	Each	Doz.	100
ARTUS. Dark scarlet, large elegant flower, splendid for bedding	\$0.05	\$0.55	\$4.00
CHRYSOLORA. Pure yellow, large flower. The best for bedding on account of its long keeping qualities06	.65	5.00
COTTAGE MAID. White, edged with rose; extra fine; lovely; splendid for bedding05	.55	4.50
COULEUR CARDINAL. Rich, glittering cardinal red06	.65	4.75
CRAMOISE BRILLIANT. Rich glowing scarlet with yellow base05	.55	4.00
DE WET (Fireglow). A new variety of remarkable beauty. Golden yellow flushed and stippled fiery orange-scarlet; the brightest bedding variety07	.70	5.25
DUCHESS DE PARMA. Brownish red with large light orange yellow border.....	.05	.55	4.50
FRED MOORE. Brilliant apricot orange shaded scarlet06	.65	5.00
KEIZERKROON. Bright red with broad golden yellow border, extra large flower on tall, strong stem; fine for forcing; very effective for bedding06	.65	5.00
LA REINE (Queen Victoria). White, sometimes showing a rose tint05	.55	4.25
POTTEBAKKER SCARLET. Bright scarlet, large flowers07	.70	5.25
ROSE GRIS-DE-LIN. Delicate rose, shading to white at base05	.55	4.50
ROSE HAWK or FLAMINGO. Rich brilliant pink on a white ground05	.55	4.50
ROSE LUISANTE. Dark silky rose pink06	.65	5.00
YELLOW PRINCE. Bright yellow, the best yellow for forcing on account of its earliness in growing, its fine shaped flower on strong, erect stem and its very sweet scent06	.65	5.00

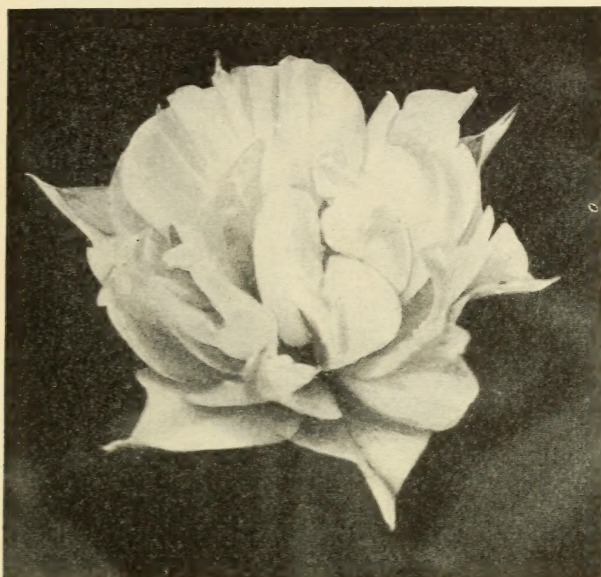
MIXED SINGLE TULIPS

	Each	Doz.	100
Red, Pink, Yellow, White; separated as to color	\$0.05	\$0.50	\$3.75
Single Early Tulips; mixed05	.50	3.00

We Pay Postage on All Bulbs at the Each and Doz. Rate. At 100 Rate Add 5 Per Cent to the Cost of the Bulbs for Carrying Charges

DOUBLE EARLY TULIPS

Ready for Delivery Late in September



Double Early Tulip—Rose Blanche

	Each	Doz.	100
IMPERATOR RUBRORUM. Fine bright scarlet; large flower; extra for forcing and bedding..	\$0.06	\$0.65	\$5.00
MR. VAN DER HOFF. Pure golden yellow, large flower, good forcer05	.55	4.50
PEACH BLOSSOM. Deep rosy-pink, deepening with age to a deep rose. A very fine flower with a wonderful color. A new variety of superb quality which we are glad to recommend..	.05	.55	4.50
ROSE BLANCHE. Pure white, splendid for bedding06	.65	5.00
TITIAN. Red with yellow border, good for forcing and for bedding. Strong, erect stem..	.06	.65	5.00
BOULE DE NEIGE. Large Peony-like pure white flower05	.55	4.50
MIXED. Red, pink, yellow, white.....	.05	.50	3.50

OLD DUTCH OR BREEDER TULIP

This fine old May Flowering type is exceedingly popular. They are very similar to the Darwins in their tall, strong growth, but with even larger flowers. They bloom about the same time as the Darwins, but have an entirely different range of colors, comprising Bronze, Terra-cotta, Orange, Brown and other artistic tones.

	Each	Doz.	100
BRONZE QUEEN. Buff, tinged bronze	\$0.05	\$0.55	\$4.25
DOM PEDRO. Coffee color06	.65	5.00
LOUIS XIV. Rich dark purple, with a broad margin of golden bronze05	.55	4.50
MADRAS. Dark bronzy yellow edge06	.65	5.00
PANORAMA. Reddish mahogany; very large forcer05	.55	4.50
SANSPAREILLE. Dark violet, extra fine.....	.07	.70	5.25
YELLOW PERFECTION. Olive yellow color ..	.05	.55	4.50
BREEDER TULIPS MIXED05	.50	4.00

LOMA used around your bulbs produces earlier, larger and better blooms.

DARWIN TULIPS

Ready for Delivery Late in September
6 Sold at the Dozen Rate, 25 at the 100 Rate



Darwin Tulip

	Each	Doz.	100
AFTERGLOW. Rosy orange, salmon-tinted margins	\$0.05	\$0.55	\$4.25
BARTIGON. Carmine red05	.55	4.00
CITY OF HAARLEM. Cardinal red, with distinct blue base; very large, strong, straight stems06	.65	5.00
CLARA BUTT. Bright salmon rose, lovely color and shape05	.55	4.00
DREAM. Soft rosy mauve on heliotrope ground.05	.55	4.25
FARNCOMBE SANDERS. Brilliant rose scarlet05	.55	4.00
FAUST. Dark satiny purple with blue base, very large and well formed07	.70	5.25
FLAMINGO. An even tone of pale shell pink.06	.65	4.75
GRETCHEN (Margaret). Soft flesh rose, beautiful shape05	.55	4.25
JUBILEE. Deep rich blue, shaded purple; large, egg-shaped flowers on strong stems08	.80	6.00
MAD. KRELAGE. Bright rose, light border, large flower05	.55	4.00
PRIDE OF HAARLEM. Brilliant carmine rose, very large05	.55	4.00
REV. H. EWBANK. Soft lavender violet05	.55	4.25
SUNDEW. The fringed crimson Darwin07	.75	5.50
WILLIAM PITT. One of the largest brilliant carmine05	.55	4.25
YELLOW DARWIN. Rich yellow globular flowers05	.55	4.25
ZULU. Rich velvety purple black; very fine distinct shape06	.65	4.75
ZWANENBURG. Large pure white; a magnificent sort07	.70	5.25
DARWIN TULIPS. Bolgiano's Superior Mixture05	.50	3.00

PARROT TULIPS

The petals are curiously fringed or lacinated on the edges and the form of the flowers, especially before they open, resembles the head and neck of a parrot.

	Each	Doz.	100
ADMIRAL CONSTANTINOPLE Red tipped orange	\$0.06	\$0.65	\$5.00
CAFE BRUN. Brown06	.65	5.00
CRAMOISIE BRILLIANT. Scarlet06	.65	5.00
MARKGRAAF VAN BADEN. Yellow06	.65	5.00
PARROT TULIPS. Mixed05	.55	4.50

COTTAGE TULIPS
or May Flowering

Ready for Delivery in September



An excellent class of single, late flowering Tulips which are especially adapted for planting among shrubbery or in masses in the open border where, if left undisturbed, they will often bloom freely for several years. They come into bloom about the same time as the Darwins. This is a great advantage as it permits the planting together of both types in one bed and having the varieties in bloom all about the same time.

	Each	Doz.	100
ARTEMIS (Lily Flowered). Reflexed petals, bright carmine rose with pure white base....	\$0.06	\$0.65	\$5.00
ECLIPSE . Beautiful large orange flower.....	.07	.75	5.50
ELLEN WILMOT . Soft creamy yellow, reflexed petals, elongated flower07	.70	5.25
FAIRY QUEEN . Rosy heliotrope, margined amber-yellow05	.55	4.50
GESNERIANA MAJOR (Spathulata). True rich crimson scarlet with blue black center.....	.05	.55	4.25
INGLESCOMBE PINK . Delicate rose pink, tinted salmon, blue-green center05	.55	4.25
LA MERVILLE . Large orange red with carmine; sweet scented05	.55	4.50
MRS. MOON . Very deep yellow, reflexed pointed petals; one of the most beautiful06	.65	5.00
PICOTEE (Maiden's Blush). White margined carmine rose05	.55	4.00
SIRENE (Lily Flowered). Rich cerise pink, reflexed petals05	.55	4.50
COTTAGE TULIPS MIXED05	.50	4.00

NARCISSUS OR DAFFODILS



Single Large Trumpet Varieties (Daffodils)

There is no hardy bulbous plant which has more points of merit than the Narcissus. Perfectly hardy, growing and doing well in almost any and every position, sun or shade, moist or dry. They are equally suited to pot culture for Winter flowering.

BICOLOR VICTORIA. Petals creamy white, trumpet rich yellow, unsurpassed for forcing. First Size Double Nose Bulbs. 12c each, \$1.35 doz., \$10.00 per 100.

EMPEROR. This grand variety is one of the finest daffodils in cultivation. Pure yellow trumpet of immense size and wide overlapping, rich primrose perianth. First Size Double Nose Bulbs. 12c each, \$1.35 doz., \$10.00 per 100.

GOLDEN SPUR. The most popular of the golden-yellow trumpets with cut flower growers as it produces freely and early its handsome, rich, deep yellow flowers. First Size Double Nose Bulbs. 12c each, \$1.25 doz., \$9.50 per 100.

KING ALFRED. One of the largest pure yellow Daffodils, immense flowers of intense yellow; trumpet large and open with a deeply filled mouth; vigorous and free; height 24 inches. 18c each, 2 for 35c, \$2.00 doz., \$15.00 per 100.

VON SION. Double. A famous old variety just recently grown successfully in America. Large double golden yellow flowers. 12c each, \$1.35 doz., \$10.00 per 100.

SIR WATKINS (Incomparabilis). Petals primrose yellow; trumpet yellow, tinted deep yellow. A large flower of great substance. 10c each, \$1.15 doz., \$9.00 per 100.

MIXED. All sorts large trumpet mixed. 7c each; 80c doz., \$5.75 per 100.

We Pay Postage on All Bulbs at the Each and Doz. Rate. At the 100 Rate Add 5 Per Cent to the Cost of the Bulbs for Carrying Charges.

NARCISSUS—(Con't.)

Medium and Small Trumpet Varieties

	Each	Doz.	100
POETICUS ORNATUS. Pheasant's Eye. Pure white petals, cup yellow with red. First Size Double Nose Bulbs	\$0.07	\$0.75	\$5.50
POETAZ, LAURENS KOSTER. Pure white flowers with orange cups borne in clusters.....	.09	.95	7.00

Jonquils

	Each	Doz.	100
CAMPERNELLE REGULOSUS. Rich yellow, sweet scented	\$0.09	\$1.00	\$7.50

IRIS—QUEEN OF PERENNIALS

TWO BEAUTIFUL NEW VARIETIES

LORD OF JUNE. Standards light Chichory blue, falls drooping lavender blue, marks of old gold. 50c each, 3 for \$1.00.

SHEKINAH. Pale yellow shading to amber, lemon colored beard. This is the fine yellow Pallida. 35c each, 3 for 75c.

CELESTE. Standards lavender-blue.

FAIRY. White, delicately bordered and suffused pale blue. The tallest standard variety giving a white effect.

FLAVASCENS. Pale lemon yellow.

FLORENTINA ALBA. White.

IRIS KING. Brown standards, coppery yellow falls.

KOCHI. Rich claret purple, early.

LOHENGRIN. Gigantic foliage and flowers. Deep violet mauve.

MME. CHERAU. White edged with bluish purple.

PALLIDA DALMATICA. Standards and falls clear lavender blue shading to pale silvery blue at base. Sweet scented

PURPLE KING. Rich red purple.

RHEIN NIXE. Standards white, falls rich violet purple with distinct narrow white edge. Very large.

QUEEN OF THE MAY. Best of pinkish shades.

Plants, 25c each, 3 for 65c, 6 for \$1.10, \$2.00 per doz. of one variety.



MIXED NAMED VARIETIES

This mixture includes many fine varieties whose identities have been lost after digging. 10c each, \$1.00 per doz.

SPANISH IRIS

SPANISH IRIS. Known as "Orchids of the Hardy Flower Garden." They grow from 18 to 24 inches high and produce their exquisite airy blooms during the last of May and through June. Plant the latter part of September. Mixture containing all colors; bulbs, 75c per doz.

BOLGIANO'S ESPECIALLY PREPARED BULB FIBRE is composed of Holland Peat, pulverized charcoal and crushed oyster shells. It furnishes in an assimilable form all the plant food elements needed by bulbs. Lb., 15c; 2 lbs., 25c.

LILIES



LILLIUM CANDIDUM (Annunciation or Madonna Lily). Many people do not know how easily they may grow these wonderful flowers in their own gardens. From twenty to thirty large snow-white bells are borne each season on their long stems giving forth a delightful fragrance during May and June. Plant as early as possible in the fall, covering with not more than 2 inches of dirt. Dust bulbs lightly with sulphur before planting to insure best results. Prices, 25c each; \$2.50 doz. Powdered sulphur, 10c per lb.

LILY OF THE VALLEY PIPS. Especially valuable for indoor forcing. If planted in open ground will come into full bearing the second year. Pips, 10c each, \$1.00 per doz., \$2.00 for bundle of 25.

WHITE CALLA LILY (Lily of the Nile). Pure white blooms of an attractive, unusual form and one of our best window plants. Pot bulbs in 6 to 8-inch pots as soon as received. Give an abundance of water, light, and heat and the results will be very satisfactory. 25c each, \$2.25 per doz.

REGALE ("A Royal Beauty"). The flowers are white, slightly suffused with pink, with a beautiful shade of canary yellow at the center, blending out part way up the trumpet. The fragrance is fascinating. A splendid hardy Lily for the garden, flowering in July. Well-grown bulbs often produce five to eight blooms.

	Each	Doz.
First size Bulbs, 6 to 7 inches in circumference....	\$0.15	\$1.50
Mammoth Bulbs, 7 to 8 inches in circumference....	.25	2.50
Jumbo Bulbs, 8 to 9 inches in circumference.....	.35	3.50

TIGRINUM SPLENDENS (Tiger Lily). Orange, spotted black. Plants, 35c each, 3 for 75c, 6 for \$1.20, \$2.25 per doz.

HEMEROCALLIS (Yellow Day Lily). 35c each, 75c for 3, \$2.50 per doz.

FLAVA (Lemon Lily). Sweet scented, clear full yellow, 2½ feet; flowers in June. 35c each, 75c for 3, \$2.50 per doz.

OTHER SPRING FLOWERING BULBS

CHIONODOXA (Glory of the Snow). Brilliant sky-blue flowers that come into bloom soon after the snow is gone. They require no further care when once planted. 5c each, 35c doz., \$2.50 per 100.

FRITILLARIA MELEAGRIS (Snake's Head or Guinea Hen Flower). Pendant bell-shaped flowers oddly marked and checkered. Some are splashed white and purple, cream and maroon, etc. Does well in semi-shade and is perfectly hardy. 10 to 18 inches high. Blooms in the spring. 5c each, 50c doz., \$3.75 per 100.

IXIAS (African Corn Lily). These charming flowers come from the Cape of Good Hope. Their rich and varied hues make a brilliant display in the spring, when planted outdoors in a protracted place. They may be grown indoors for winter blooms also. 5c each, 35c doz., \$2.50 per 100.

OTHER SPRING FLOWERING BULBS

(Continued)

MUSCARI (Heavenly Blue Grape Hyacinths). Numerous spikes of light blue flowers in early spring. 5c each, 40c doz., \$2.75 per 100.

OXALIS. Large, pink, white, lavender, and yellow flowers held well above dwarf sturdy growth. Keep close to the light to keep foliage from growing too long. Bulbs, 5c each, 45c per doz.

SCILLAS (Squills). Exquisite rich blue flowers in the early spring. A charming effect may be had by planting in conjunction with yellow crocus, Chionodoxas and Snowdrops. 5c each, 50c doz., \$3.75 per 100.

SNOWDROPS. The loveliest and earliest spring flowers. Single Snowdrops, 5c each, 45c doz., \$3.50 per 100. Double Snowdrops, 6c each, 65c doz., \$5.00 per 100.

WINTER ACONITE (Eranthis Hyemalis). Golden blossoms look charming resting on an emerald-green cushion of leaves. The foliage remains long after the flowers and does well in a moist situation, such as under trees. 5c each, 35c doz., \$2.50 per 100.

SWEET PEAS

Splendid results are often obtained from growing Sweet Peas in October or November. A perfectly drained soil so situated as not to be subject to too frequent or severe freezing should be selected, and the seed covered about three inches.



SPENCER SWEET PEAS

Plant in October or November

- 971. **AUSTIN FREDERICK IMPROVED**. Giant lavender.
 - 973. **AVALANCHE**. Glistening white.
 - 974. **CRIMSON KING**. Deep crimson.
 - 977. **GLENEAGLES**. Very large lavender.
 - 978. **HAWLMARK PINK**. Deep rose pink.
 - 979. **HEAVENLY BLUE**. Delphinium blue.
 - 982. **HERCULES**. Rosy pink.
 - 980. **MARY PICKFORD**. Cream pink suffused salmon.
 - 983. **PINKIE**. Large rose pink.
 - 984. **ROYAL PURPLE**. Rich purple.
 - 985. **ROYAL SCOT**. Orange scarlet.
 - 997. **SENATOR SPENCER**. Chocolate flake.
 - 988. **SUNSET**. Bright rose, amber ground.
 - 990. **TANGERINE**. Improved, glowing orange.
 - 992. **VALENTINE**. Blush pink.
 - 998. **WARRIOR**. Maroon.
 - 999. **WHAT JOY**. Cream.
 - 1001. **YOUTH**. Large white, pink picotee.
- The above varieties, pkt., 10c; oz., 25c; ¼ lb., 75c; lb., \$2.50.
- 1002. **SPENCERS MIXED**. Pkt., 10c; oz., 20c; ¼ lb., 60c; lb., \$1.75.

EARLY SPENCER SWEET PEAS

They flower several weeks earlier than the regular Spencers.

- 958. **EARLY AVIATOR**. Dazzling crimson scarlet.
 - 959. **BLUE BIRD**. Violet blue.
 - 960. **COLUMBIA**. Salmon rose standard, white wings.
 - 961. **GLITTERS**. Cerise.
 - 962. **HARMONY**. Clear lavender.
 - 963. **MEADOW LARK**. Cream.
 - 964. **MRS. KERR**. Salmon.
 - 965. **SNOWSTORM IMPROVED**. Pure white.
 - 966. **SPRINGSONG**. Salmon pink on cream.
 - 967. **VULCAN**. Vivid scarlet.
 - 968. **ZVOLANEK'S ROSE**. Giant rose pink.
- The above varieties, pkt., 10c; oz., 50c; ¼ lb., \$1.50.
- 969. **MIXED EARLY SPENCERS**. A well-balanced mixture of the newest and brightest colors. Pkt., 10c; oz., 35c; ¼ lb., 90c.

PERENNIAL AND BIENNIAL
SEEDS AND PLANTS

PLANTS. We can supply large field-grown plants ready to be transplanted, after August 15th.

PRICES (except where otherwise noted) **ON ALL VARIETIES OF PLANTS:** 25c each, 3 for 65c, 6 for \$1.10, \$2.00 per doz. of one variety.

POSTAGE ON PLANTS. Add postage as follows: Single plants, 8c; 3 plants, 10c; 6 plants, 15c; 12 plants, 25c. We accept no responsibility for delays or conditions that may prove injurious to the contents.



Columbine

ASTERS (Hardy or Michelmas Daisy). Lovely, daisy-like flowers, 4 to 5 ft. high; blooming September and October. Lavender pink. Plants.

Climax. This plant is very vigorous, growing about 3 ft. high and bearing a profusion of lavender blue flowers.

Mrs. F. W. Raynor. A large flowered variety. The nearest to red of any Aster. Scarce.

996. PERENNIAL ASTER SEED MIXED. Various shades of blue. Pkt., 10c; $\frac{1}{8}$ oz., 35c.

BLEEDING HEART (Dicentra Spectabilis). Rose crimson, 18 inches. Plants, 45c each.

FALSE BLEEDING HEART (Dicentra Formosa). Flowers pink, fern-like foliage; 1 ft. tall; May to June. Plants only.

819. CAMPANULA, SINGLE MIXED CANTERBURY BELLS. Blooms from early to midsummer; height, 2 ft. Of most attractive growth, and the second year produce abundantly the beautiful bell-flowers in many colors. Seeds, pkt., 10c; $\frac{1}{4}$ oz., 20c. Plants.

830. COLUMBINE (Aquilegia). 1 to 2 ft.; May to July. One of the most valuable of the early flowering perennials. The long-spurred blooms and lengthy stems are well adapted to use as cut flowers, but they also produce a beautiful effect when massed in the garden. They do best in a sheltered location that gets the sunshine.

Long Spurred Hybrids. Mixed colors. Seeds, pkt., 10c; $\frac{1}{8}$ oz., 40c.

Chrysantha (Golden Columbine). Yellow flowers with long spurs. Plants only.

Canadensis (American Columbine). Red and yellow flowers. Plants only.

Rocky Mountain Blue Columbine. Plants only.

PRICES (except where otherwise noted) ON ALL VARIETIES OF PLANTS, 25c each, 3 for 65c, 6 for \$1.10, \$2.00 per doz. of one variety.

CHRYSANTHEMUM PLANTS

Single Flowering	Color	Blooming Season
Dear Heart (Button Varieties)	White	Oct. 20
Bright Eyes	Pink and Yellow	Oct. 20
LeRoy Miller	Pink	Nov. 1
Pride of Riga (Pompom Varieties)	Bronze Red	Nov. 5
Estelle May	Coppery Yellow	Nov. 1
Homstead	Bronze	Oct. 15
Pink Dandy	Pink	Nov. 1
Rena	Bronze	Oct. 20
Red Doty	Reddish Lavender	Oct. 20
White Doty	White	Oct. 20
Yellow Diana (Large Types)	Yellow	Oct. 15
Katherine B.	Yellow	Oct. 15
Thomas B. (Anemone Flowering Type)	Bronze Red	Oct. 15
Firebird	Red	Nov. 5



Gold Medal Hybrid

818. CANDYTUFT (Hardy). May and June; six ins. Evergreen plants covered with white or pale pink blooms in spring and early summer. Excellent for rockeries or borders. Seed, pkt., 10c; 1/8 oz., 40c. Plants.

831. COREOPSIS GRANDIFLORA. One to two feet; June to October. During the summer bears profusely golden yellow flowers which are very useful for cutting. Seed, pkt., 10c; 1/4 oz., 25c; oz., 75c. Plants.

845. DAISY, ENGLISH DOUBLE MIXED (Bellis Perennis). The hardy plants thrive best in cold, shady places. The attractive, small, double flowers appear very early in the summer. Seed, pkt., 10c; 1/8 oz., 35c. Plants, 15c each, \$1.50 doz.

846. DAISY, SHASTA ALASKA. Large white flowers with a yellow center that make a splendid show all summer. Useful for cutting. Seed, pkt., 10c; 1/8 oz., 25c. Plants.

DELPHINIUM

(Perennial Larkspur)

852. CHINESE MIXED. Although a perennial, this will bloom in August if planted in early spring. On account of its dwarfness (2 to 3 feet high) and brilliant blue and white flowers, it is a popular plant for bedding and cut flowers. Seed, pkt., 10c and 25c; 1/4 oz., 75c. Plants.

853. GOLD MEDAL HYBRIDS. Mixture of the most beautiful tall varieties. Long graceful spikes of harmonizing blue colors. Plants grow 5 to 8 ft. tall. Seed, pkt., 20c; 1/4 oz., 50c. Plants, 30c each, \$2.50 per doz.

854. BELLADONA. Tall, light blue. Seed, pkt., 20c; 1/8 oz., 75c.

BELLAMOSUM. A dark blue form of Belladonna with which it is identical excepting in color, which is a rich deep blue. Seed, pkt., 20c; 1/8 oz., 75c. Plants.

1018. FORMOSUM. Dark blue, white center. Seed, pkt., 20c; 1/8 oz., 75c. Plants.

PRICES (except where otherwise noted) ON ALL PLANTS, 25c each, 3 for 65c, 6 for \$1.10, \$2.00 per doz. of one variety.

851. **DIANTHUS PLUMARIUS** (Pheasant's Eye Pink). Sweet scented, low growing, hardy fringed flowers; pink or white. Blooms in early summer. Seed, pkt., 10c; ¼ oz., 35c; oz., \$1.00. Plants.

EUPATORIUM (Coelestinum). A pretty hardy plant, with light blue flowers similar to the Ageratum. This is a particularly fine thing in hardy perennials; a splendid cut flower; 18 to 24 inches. (Ageratoides). Pure white flowers; 4 ft. Plants.

1021. **FOXGLOVE MIXED** (*Digitalis*). The plants grow three feet high and bear long spikes of thimble-shaped flowers, brilliantly colored and spotted. If planted in well-drained soil will thrive nicely. Seed, pkt., 10c; ¼ oz., 25c; oz., 75c. Plants.

860. **GAILLARDIA GRANDIFLORA**. June to October; two ft.

The beautiful single flowers are red in the center with clear yellow markings on outer edges of petals. Seed, pkt., 10c; ¼ oz., 25c; oz., 75c. Plants.

GYPSOPHILA PANICULATA (Baby's Breath). 2 to 3 ft. Feathery panicles of tiny white flowers. Good for cutting. Seed, pkt., 10c; oz., 25c. Plants also.

866. **HIBISCUS MIXED** (Mallow). Of late the Mallows have become very popular, and are worthy of a place in all beds of perennials. The plants attain a height of from 4 to 6 ft. and produce profusely the handsomest flowers from June until fall. Seed, pkt., 10c; ¼ oz., 20c; oz., 75c. Plants.

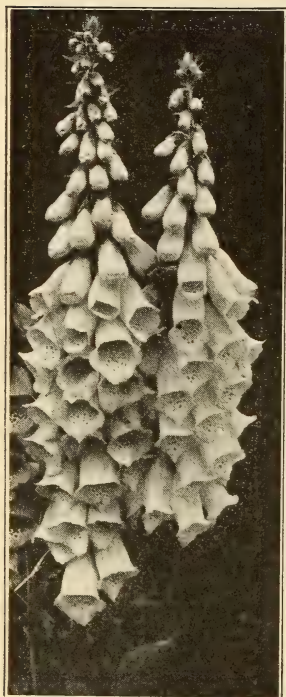
HOLLYHOCKS. Six to 8 ft.; August-September. These are best treated as biennials. One of the most showy of all hardy garden plants. Our plants produce magnificent long spikes bearing beautiful double flowers which measure 3 to 4 inches across.

867. Crimson; 1025. Maroon; 1026. Newport pink; 868. Salmon; 1027. White; 1028. Yellow. Seed, pkt., 10c; ¼ oz., 35c; oz., \$1.25.

869. Double Mixed. Seed, pkt., 10c; ¼ oz., 30c; oz., \$1.00.

LINUM (Blue Flax). 1½ ft. Blooms all summer. Seed, pkt., 10c; oz., 25c. Plants also

1044. **ORIENTAL POPPY**. 3 ft.; May and June. Flowers of gorgeous brilliancy. Colors from soft rose to dazzling scarlet and richest maroon purple. Seed, pkt., 10c; ¼ oz., 40c. Plants: Scarlet Queen, 25c each; Salmon Queen, 30c each.



Digitalis (Fox Glove)

PLATYCODON (Japanese Bell Flower). 2 ft. Blue flowers; July to October. Plants only.

PHLOX (Hardy). One of the most important perennials. Does well in any soil. Produces large heads of fragrant flowers from early July to September. Height, 1½ to 3 ft.:

899. Choice Mixed. Seed, pkt., 10c; ¼ oz., 75c.

Athis. Clear salmon.

Bridesmaid. White with pink eye.

Jules Sandreau. Extra large pink.

R. P. Struthers. Bright cherry red.

Miss Lingard. Tall, pure white.

Rheinlander. Immense salmon pink.

Iris. Light purple.

Mrs. C. Dorr. Good mauve.

Good strong plants of all above.

PHLOX SUBULATA (Moss or Mountain Pink). An early spring-flowering type with pretty moss-like evergreen foliage, which, during the flowering season, in April and May, is hidden under the masses of bloom. An excellent plant for the rockery, the border, and invaluable for carpeting the ground. White or pink. Plants only.

PRIMULA (English Primrose or Cowslip). Dwarf; bright red and yellow flowers in early spring. Seed, pkt., 10c; ⅓ oz., 50c. Plants also.



Bolgiano's Magnificent Trimardeaux Pansies

PRICES (except where otherwise noted) ON ALL PLANTS, 25c each, 3 for 65c, 6 for \$1.10, \$2.00 per doz. of one variety.

BOLGIANO'S PANSIES

995. **ROGLI GIANTS.** A very select strain noted for its robust habit and early flowering. The extremely large flowers of heavy texture are held well above the foliage on long, strong stems. The range of rich dark colors is perfectly wonderful. Seed, pkt., 35c; $\frac{1}{8}$ oz., \$1.00; oz., \$7.00.

892. **EXHIBITION GIANTS.** The most beautiful forms and color combinations imaginable. Flowers attain a size of two to three inches under favorable conditions. Seed, pkt., 25c; $\frac{1}{8}$ oz., 75c.

893. **GIANT ADONIS.** Light blue with a white margin. Seed, pkts., 10 and 25c; $\frac{1}{8}$ oz., 50c; $\frac{1}{4}$ oz., 90c.

1039. **GIANT GOLD WITH BLACK EYE.** Seed, pkts., 10 and 25c; $\frac{1}{8}$ oz., 50c; $\frac{1}{4}$ oz., 90c.

894. **GIANT TRIMARDEAUX MIXED.** Beautiful color combinations. Each flower has three blotches of color, and attains great size. Seed, pkts., 10 and 25c; $\frac{1}{4}$ oz., 50c; oz., \$1.20.

EXHIBITION PANSY PLANTS

A mixture of the finest color combinations and attractive forms of **GIANT EXHIBITION PANSIES.** Very large Plants, 10c each; per doz., \$1.00. Transplanted plants for setting out this fall for spring blooms, 50 for \$1.00, \$1.75 per 100.

TUFTED PANSY

VIOLA, JERSEY GEM. One of the new and most valuable bedding Violas yet introduced. Well suited to our climate in which it will succeed in any good garden soil in a sunny position, blooming practically from May to the end of the season. Flowers are pure violet color with stems about 6 inches long. Plants, 30c each; 3 for 75c; 6 for \$1.20; \$2.25 per doz.

VIOLA, LUTEA. Bright yellow. Plants only.

912. **PYRETHRUM.** One to two ft.; May and June. A very hardy perennial, daisy-like flowers. Most desirable for edging or bordering beds filled with other plants. Seed, pkt., 15c; $\frac{1}{4}$ oz., 60c. Plants.

SEDUM (Stonecrop) SPECTABILE. A pretty erect-growing variety with broad, light green foliage and immense heads of showy rose-colored flowers during the Autumn; 18 inches. Plants only.

921. **SWEET ROCKET MIXED.** Plants attain a height of 2 feet and produce sweet scented panicles of white and lavender flowers. Pkt., 10c; $\frac{1}{4}$ oz., 20c; oz., 75c. Plants.

SWEET WILLIAM

AN OLD-TIME, HARDY GARDEN FAVORITE

922. **Newport Pink (Watermelon Pink).** Pkt., 10c; $\frac{1}{4}$ oz., 30c; oz., 95c.

923. **Scarlet Beauty.** Bright scarlet; single. Pkt., 10c; $\frac{1}{4}$ oz., 25c; oz., 75c.

1052. **White (Double).** Pkt., 10c; $\frac{1}{4}$ oz., 30c; oz., 95c.

926. **Johnson's Giant Hybrids.** Immense flowers; large eyes. Pkt., 10c; $\frac{1}{4}$ oz., 35c.

924. **Single Mixed.** Pkt., 10c; $\frac{1}{4}$ oz., 20c; oz., 60c.

925. **Double Mixed.** Pkt., 10c; $\frac{1}{4}$ oz., 25c; oz., 75c. Plants of all varieties.

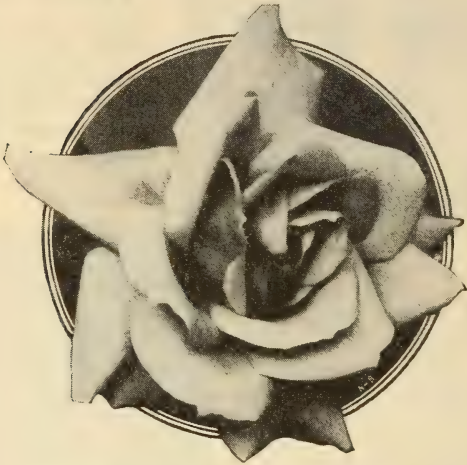
EVERBLOOMING HYBRID SWEET WILLIAM. Brilliant scarlet; blooms all summer. Seed, pkt., 10c; $\frac{1}{4}$ oz., 30c. Plants also.

VERONICA (Speedwell) SPICATA. Long spikes of bright blue flowers during June and July; 18 inches. An excellent border plant. Plants only.

931. **WALL FLOWER.** An attractive biennial. Pkt., 10c; $\frac{1}{4}$ oz., 20c; oz., 60c. Plants.

1055. **SIBERIAN WALL FLOWER.** Flashy trusses of orange yellow in May. Pkt., 10c; oz., 50c. Plants.

ROSES
For Fall Planting



Our Stock Is Budded on Japonica Multiflora Roots
Strong 2-Year-Olds—Field-Grown
Seven New Everblooming Varieties

DAME EDITH HELEN. Color a brilliant yet soft Rose du Barri Pink.

ETOILE DE HOLLAND. A deep velvety crimson rose.

GOLDEN PERNET (Julien Potin). Brilliant golden yellow; free blooming.

PRESIDENT HERBERT HOOVER. A happy blend of orange and pink.

REV. F. PAGE ROBERTS. A large, double, beautifully formed, of indian yellow, covered with carmine on the reverse of the pedals.

TALISMAN. Shadings of gold, apricot, yellow, deep pink and old rose.

VILLE-DE-PARIS. A beautiful buttercup yellow. Fragrant and free blooming.

Any of the above, 90c each, 3 for \$2.50.

STANDARD VARIETIES. 75c each, 3 for \$2.00, 6 for \$3.75, 12 for \$7.00.

BETTY. Glowing coppery rose, suffused with a golden sheen.

CHARLES K. DOUGLAS. Bright red; vigorous.

DUCHESS OF WELLINGTON. An intense saffron yellow stained deep crimson.

FRANCIS SCOTT KEY. Rich Crimson red.

FRAU KARL DRUSCHKI. Beautiful pure white.

GEORGES PERNET. Oriental red.

KAISERINE AUGUSTA VICTORIA. Soft pearly white, tinted yellow.

LADY ALICE STANLEY. Coral and salmon.

LADY ASHTOWN. Solid pink; free blooming and vigorous.

MME. EDOUARD HERRIOTT. Superb coral-red, shaded with yellow and bright scarlet.

MRS. AARON WARD. A distinct indian yellow, shading lighter toward edges.

MRS. CHARLES BELL. Delicate salmon pink; vigorous.

MME. BUTTERFLY. Soft light pink.

RADIANCE. Brilliant rose-pink.

RED RADIANCE. Deep rose-red.

SCOTT COLUMBIA (Improved Columbia). Rose-pink.

CLIMBING ROSES. 75c each, 3 for \$2.00, 6 for \$3.75, 12 for \$7.00.

CLIMBING LADY ASHTOWN. Everblooming; large, well-formed flowers of pale carmine pink with golden yellow at the base.

ZEPHIRINE DROUHIN. Everblooming; well-formed, bright silvery-pink, semi-double flowers of good size and exquisite perfume.

CLIMBING AMERICAN BEAUTY. Brilliant carmine.

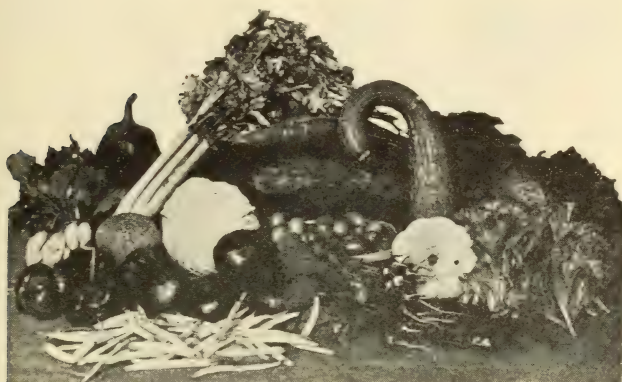
DR. W. VAN FLEET H. W. Beautiful pale pink.

MARY WALLACE. Charming flowers of brilliant warm pink.

PAUL SCARLET CLIMBER. Clear vivid scarlet.

SILVER MOON. Buds; pale yellow. Flowers pure white.

BOLGIANO'S GARDEN SEEDS FOR ALL PLANTING



BEANS

	Pt.	Qt.	Pk.	Bu.
Refugee 1000 to 1	\$0.35.	\$0.60	\$2.00	\$7.00
Tendergreen35	.60	2.00	7.00
Full Measure35	.60	2.00	7.00
Stringless Greenpod35	.60	2.00	7.00
Giant Stringless35	.60	2.00	7.00
Black Valentine30	.60	1.85	6.50
King of the Earlies30	.60	1.85	6.50
Bolgiano's New Wax35	.60	2.00	7.00
Improved Stringless Refugee Wax.....	.35	.60	2.00	7.00
Wardwell's Kidney Wax30	.60	1.85	6.50
Hodson's Wax30	.60	1.85	6.50

BEEETS

	Pkt.	Oz.	1/4 lb.	Lb.
Superb	\$0.10	\$0.15	\$0.35	\$1.10
Crosby Egyptian10	.15	.30	.85
Detroit Dark Red10	.15	.30	.85
Deep Blood Beauty10	.15	.30	.95
Wonderful Early Spring10	.15	.35	1.00
Eclipse10	.15	.30	.85

CABBAGE SEED

	Pkt.	Oz.	1/4 lb.	Lb.
New Early	\$0.10	\$0.25	\$0.80	\$3.00
Big Winter Wakefield10	.25	.80	3.00
Early Jersey Wakefield10	.25	.75	2.50
Large Charleston Wakefield10	.25	.75	2.50
Early Flat Dutch10	.25	.75	2.50
Allhead Early10	.25	.75	2.50
All Season10	.25	.75	2.50
Succession10	.25	.75	2.50
Extra Large Flat Dutch10	.25	.75	2.50
Drumhead Savoy10	.25	.75	2.50
Mammoth Red Rock10	.25	.75	2.50
Wisconsin All Season (Wilt Resistant) ..	.10	.35	1.15	4.00

CARROTS

	Pkt.	Oz.	1/4 lb.	Lb.
Chantenay	\$0.10	\$0.15	\$0.30	\$0.85
Danvers10	.15	.30	.85
Oxheart10	.15	.30	.90
Early Rubicon10	.15	.35	1.00

CAULIFLOWER

	Pkt.	Oz.	¼ lb.
Early Snowball	\$0.10	\$2.00	\$7.50
Dwarf Erfurt10	2.00	7.50
Autumn Giant10	.50	1.65

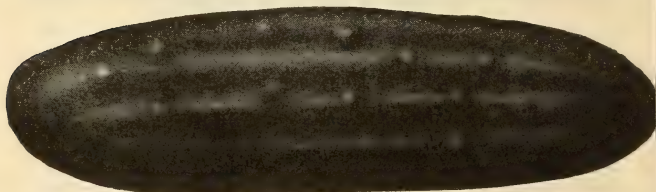
COLLARDS

	Pkt.	Oz.	¼ lb.	Lb.
True Georgia Southern	\$0.10	\$0.15	\$0.20	\$0.65

CELERY

	Pkt.	Oz.	¼ lb.	Lb.
Golden Self Blanching	\$0.10	\$0.45	\$1.35	\$5.00
Easy Blanching10	.30	1.00	3.50
Sweet Nut10	.15	.50	1.75
Giant Pascal10	.15	.35	1.25
Celeriac, Giant Smooth Prague.....	.10	.15	.50	1.75

CUCUMBER



Bolgiano's Early Fortune Cuke

BOLGIANO'S EARLY FORTUNE CUCUMBER. By far the earliest and best cucumber for table, market or shipping purposes. Rich, attractive deep green. Regular in size. Free from bitterness. Crisp and brittle. Pkt., 10c; oz., 15c; ¼ lb., 35c; lb., \$1.00.

	Pkt.	Oz.	¼ lb.	Lb.
Bolgiano's Prosperity White Spine	\$0.10	\$0.15	\$0.35	\$1.25
Klondyke10	.15	.30	.95
Arlington White Spine10	.15	.25	.90
Improved Extra Early White Spine10	.15	.30	.95

ENDIVE

ESCAROLE, or Broad-Leaved Batavian. Leaves a pale green. Forms large heads of broad, thick leaves. Pkt., 10c; oz., 15c; ¼ lb., 35c; lb., \$1.25.

GREEN CURLED. Self-blanching. Pkt., 10c; oz., 15c; ¼ lb., 35c; lb., \$1.25.

WHITE CURLED. As the color of the leaves is a light golden yellow, little or no blanching is required. Pkt., 10c; oz., 15c; ¼ lb., 35c; lb., \$1.25.

LETTUCE

BIG BOSTON (Special Stock). Produces during all seasons, under ordinary favorable conditions, splendid, large, buttery-yellow heads, packed with thoroughly blanched leaves, crisp, tender and sweet. Although "Big Boston" is one of the best large-heading midsummer lettuces, it is also peculiarly adapted for late fall culture. Pkt., 10c; oz., 15c; ¼ lb., 35c; lb., \$1.25.

LOS ANGELES. Large, late. Pkt., 10c; oz., 20c; ¼ lb., 60c; lb., \$2.00. Postpaid.

TRIANON COS. Pkt., 10c; oz., 15c; ¼ lb., 45c; 1 lb., \$1.50.

MASTERPIECE. Pkt., 10c; oz., 25c; ¼ lb., 75c; lb., \$2.50.

MAY KING. Pkt., 10c; oz., 15c; ¼ lb., 35c; lb., \$1.25.

NEW YORK or WONDERFUL. Pkt., 10c; oz., 20c; ¼ lb., 60c; lb., \$2.00.

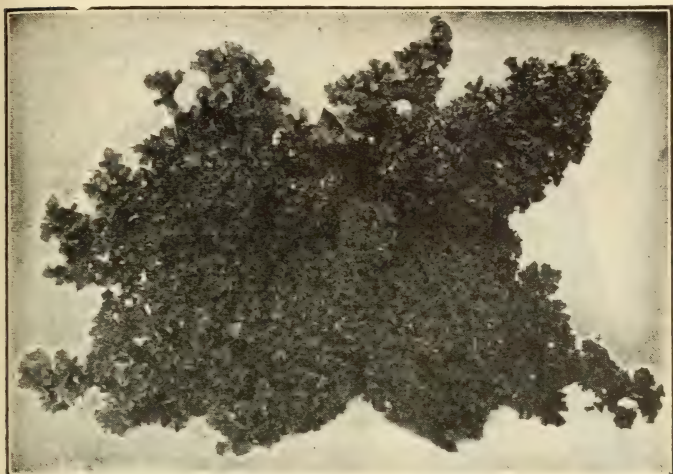
HANSON. Pkt., 10c; oz., 15c; ¼ lb., 35c; lb., \$1.25.

GRANDS RAPIDS. Pkt., 10c; oz., 15c; ¼ lb., 35c; lb., \$1.25.

ICEBERG. Pkt., 10c; oz., 15c; ¼ lb., 45c; lb., \$1.50.

ECLIPSE COS. Pkt., 10c; oz., 15c; ¼ lb., 45c; lb., \$1.50.

SALAMANDER. Pkt., 10c; oz., 15c; ¼ lb., 45c; lb., \$1.25.



Dwarf Curled Norfolk Kale

KALE

EXTRA DWARF GREEN CURLED SCOTCH, or NORFOLK. It is hardy and will remain over winter in any place where temperature does not go below zero. Pkt., 10c; oz., 15c; $\frac{1}{4}$ lb., 25c; lb., 75c.

NEW AMERICAN LONG-STANDING EXTRA CURLED KALE. Beautiful green color, perfectly hardy. Will stand the coldest winters. Pkt., 10c; oz., 15c; $\frac{1}{4}$ lb., 25c; lb., 75c.

IMPERIAL CURLY LONG-STANDING. A beautiful curled and crimped sort, of strong, vigorous habit; perfectly hardy, bright green color, and very attractive in appearance. Pkt., 10c; oz., 15c; $\frac{1}{4}$ lb., 25c; lb., 75c.

CURLED BEAUTY or BLUE SCOTCH KALE. Distinct blue-green. Heavily curled. Pkt., 10c; oz., 15c; $\frac{1}{4}$ lb., 35c; lb., \$1.00.

SIBERIAN DWARF CURLED. 50c lb.

PARSLEY

MARKET GARDENER'S TRIPLE CURLED. Exceedingly large yields. Stands heat and cold. Pkt., 10c; oz., 15c; $\frac{1}{4}$ lb., 30c; lb., 75c. All postpaid.

PEPPER

Postpaid

ROYAL KING. Pkt., 10c; oz., 30c; $\frac{1}{4}$ lb., \$1.00; lb., \$3.50.

CHINESE GIANT. Pkt., 10c; oz., 45c; $\frac{1}{4}$ lb., \$1.35; lb., \$5.00.

RUBY KING. Large scarlet fruit; rather mild flavor. Pkt., 10c; oz., 25c; $\frac{1}{4}$ lb., 75c; lb., \$2.50.

WORLD BEATER. Pkt., 10c; oz., 30c; $\frac{1}{4}$ lb., \$1.00; lb., \$3.50.

PERFECTION. Pimento. Pkt., 10c; oz., 25c; $\frac{1}{4}$ lb., 85c; lb., \$3.00. Postpaid.

BELL or BULL NOSE. Pkt., 10c; oz., 25c; $\frac{1}{4}$ lb., 85c; lb., \$3.00.

LONG RED CAYENNE. Pkt., 10c; oz., 25c; $\frac{1}{4}$ lb., 90c; lb., \$3.25.

RED CHILI. Pkt., 10c; oz., 35c; $\frac{1}{4}$ lb., \$1.15; lb., \$4.00.



PEAS

On Peas, Beans and Sugar Corn, We Pay Postage Only on Packages, Pints and Quarts. Larger Quantities, Carrying Charges Extra.

LAXTONIAN. Extremely early, wrinkled pea. Peas very sweet; deep green. Pkt., 10c; pt., 35c; qt., 60c; pk., \$2.50; bu., \$8.50.

THOMAS LAXTON. Pkt., 10c; pt., 35c; qt., 60c; pk., \$2.50; bu., \$8.50.

GRADUS. Pkt., 10c; pt., 35c; qt., 60c; pk., \$2.50; bu., \$9.00.

	Pt.	Qt.	Pk.	Bu.
Early Bird	\$0.35	\$0.60	\$2.50	\$9.00
Early Springtime35	.60	2.50	9.00
Long Pod Alaska35	.60	2.50	8.50
Pilot35	.60	2.50	9.00
Extra Early Alaska35	.60	2.25	8.00
Ameer35	.60	2.50	8.50
First and Best35	.60	2.25	8.00
Wonder Worker35	.60	2.50	9.00
100% Profit35	.60	2.65	9.25
Little Marvel35	.60	2.50	9.00
Telephone35	.60	2.25	8.00
Notts Excelsior35	.60	2.50	8.50
Premium Gem35	.60	2.50	8.50
American Wonder35	.60	2.50	8.50
Alderman35	.60	2.25	8.00
Melting Sugar35	.65	2.85	10.50

ONIONS

Postpaid

	Pk.	Oz.	¼ lb.	Lb.
White Silver Skin	\$0.10	\$0.20	\$0.65	\$2.25
Southport White Globe10	.25	.75	2.50
Southport Yellow Globe10	.15	.50	1.75
Yellow Globe Danvers10	.15	.50	1.75
Red Wethersfield10	.15	.50	1.75
White Portugal10	.20	.65	2.25
Yellow Flat Danvers10	.15	.45	1.50

RADISHES

EARLY SCARLET GLOBE. A splendid extra early, round, bright red radish. Pkt., 10c; oz., 15c; ¼ lb., 25c; lb., 75c.

WHITE TIP SCARLET TURNIP. Pkt., 10c; oz., 15c; ¼ lb., 25c; lb., 75c.

EARLY LONG SCARLET SHORT TOP. Pkt., 10c; oz., 15c; ¼ lb., 25c; lb., 75c.

ICICLE. Long white. Pkt., 10c; ¼ lb., 25c; lb., 75c; 5 lbs., \$3.25.

WHITE CHINESE WINTER. Pkt., 10c; oz., 15c; ¼ lb., 25c; lb., 75c.

CHINESE ROSE WINTER. Pkt., 10c; oz., 15c; ¼ lb., 25c; lb., 75c.

LONG BLACK SPANISH. Pkt., 10c; oz., 15c; ¼ lb., 25c; lb., 85c.

TURNIPS



Purple
Top
White
Globe
Turnip

PURPLE TOP WHITE GLOBE. Superior quality. A heavy cropper, early, and a fine keeper. Pkt., 10c; oz., 15c; $\frac{1}{4}$ lb., 20c; lb., 50c; 5 lbs., \$2.25.

EARLY SNOWBALL. Very fine. Pkt., 10c; oz., 15c; $\frac{1}{4}$ lb., 20c; lb., 50c.

GOLDEN BALL. Yellow, early. Pkt., 10c; oz., 15c; $\frac{1}{4}$ lb., 20c; lb., 50c.

EXTRA EARLY PURPLE TOP MILAN. Pkt., 10c; oz., 15c; $\frac{1}{4}$ lb., 25c; lb., 75c.

PURPLE TOP WHITE FLAT STRAP LEAF. Pkt., 10c; oz., 15c; $\frac{1}{4}$ lb., 20c; lb., 50c.

WHITE FLAT DUTCH EXTRA EARLY. Pkt., 10c; oz., 15c; $\frac{1}{4}$ lb., 20c; lb., 40c.

GREEN TOP YELLOW ABERDEEN. Pkt., 10c; oz., 15c; $\frac{1}{4}$ lb., 20c; lb., 50c.

YELLOW GLOBE. Pkt., 10c; oz., 15c; $\frac{1}{4}$ lb., 20c; lb., 50c.

AMBER GLOBE. Pkt., 10c; oz., 15c; $\frac{1}{4}$ lb., 20c; lb., 50c.

RUTABAGA — LONG ISLAND IMPROVED PURPLE TOP. Pkt., 10c; oz., 15c; $\frac{1}{4}$ lb., 20c; lb., 65c.

SPINACH

BOLGIANO'S SELECTED BLOOMSDALE SAVOY. A mammoth seeded selection that possesses a vitality and vigor of growth and far outyields any other variety. After many years of tireless effort at breeding we are pleased to be able to offer a limited quantity of this improvement on the old standby. Productive, tender and excellent quality. Oz., 10c; $\frac{1}{4}$ lb., 15c; lb., 25c; 5 lbs., \$1.00; 10 lbs. at 17c lb.; 25 lbs. at 15c lb.

NORFOLK BLOOMSDALE CURLED SAVOY BLIGHT RESISTANT. Pkt., 10c; oz., 15c; $\frac{1}{4}$ lb., 20c; lb., 30c.

LONG STANDING SAVOY. Pkt., 10c; oz., 15c; $\frac{1}{4}$ lb., 20c; lb., 30c.

PRINCESS JULIANA. Pkt., 10c; oz., 15c; $\frac{1}{4}$ lb., 20c; lb., 30c.

KING OF DENMARK. Pkt., 10c; oz., 15c; $\frac{1}{4}$ lb., 20c; lb., 30c.

NEW SPRING. Oz., 10c; $\frac{1}{4}$ lb., 15c; lb., 30c; 5 lbs., \$1.25.

VIROFLAY. Oz., 10c; $\frac{1}{4}$ lb., 15c; lb., 25c; 5 lbs., \$1.00.

TOMATOES

All Postpaid

BREAK O' DAY. Pkt., 10c and 25c; oz., 50c; $\frac{1}{4}$ lb., \$1.65; lb., \$6.00.

THE ARLINGTON (Strain of Marglobe). Pkt., 10c and 25c; oz., 35c; $\frac{1}{4}$ lb., \$1.15; lb., \$4.00.

BOLGIANO. Pkt., 10c and 25c; oz., 35c; $\frac{1}{4}$ lb., \$1.05; lb., \$3.75.

IMPROVED STONE. Pkt., 10c; oz., 25c; $\frac{1}{4}$ lb., 80c; lb., \$2.75.

GREATER BALTIMORE. Pkt., 10c; oz., 25c; $\frac{1}{4}$ lb., 85c; lb., \$3.00.

FLORIDA SPECIAL. Bright resistant. Pkt., 10c; oz., 35c; $\frac{1}{4}$ lb., \$1.05; lb., \$3.75.

LIVINGSTON'S GLOBE. Purple-red. Pkt., 10c; oz., 35c; $\frac{1}{4}$ lb., \$1.25; lb., \$4.00.

FROM
Name
Postoffice
State
Rural Route
Box No.
Street and No.
PLEASE WRITE NAME AND ADDRESS PLAINLY

PLACE
2-CENT
STAMP
HERE

F. W. BOLGIANO & CO.

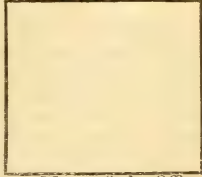
“Capitol City” Seeds

607 E St. N. W. WASHINGTON, D. C.

Form No. 6001

POST OFFICE DEPARTMENT
THIRD ASSISTANT POSTMASTER GENERAL
DIVISION OF MONEY ORDERS

No. _____
Stamp of Issuing Office



The Postmaster
will insert

here _____
the office drawn on, when the office named by
the remitter in the body of this application is not a Money Order Office.

Spaces above this line are for the Postmaster's record, to be filled in by him

Application for Domestic Money Order

Spaces below to be filled in by purchaser, or, if necessary,
by another person for him

Amount

_____ Dollars _____ Cents

Pay to } **F.W.BOLGIANO & CO.**
Order of } _____
(Name of person or firm for whom order is intended)

Whose }
Address }
Is } No. **607 E STREET N.W.** Street

Post } **WASHINGTON,**
Office } _____

State **D.C.**

Sent by _____
(Name of sender)

No. _____ Street
City }
and }
State } _____

PURCHASER MUST SEND ORDER AND COUPON TO PAYEE

c5-7155

Fees for Money Orders Drawn on Domestic Form

Payable in the United States, including Hawaii, Porto Rico, and the United States Virgin Islands, or in Guam and Tutuila (Samoa); also for orders payable in Antigua, Bahamas, Barbados, Bermuda, British Guiana, British Honduras, British Virgin Islands, Canada, Canal Zone, Cuba, Dominica, Grenada, Jamaica, Montserrat, Nevis, Newfoundland, Philippine Islands, St. Kitts, St. Lucia, St. Vincent, and Trinidad and Tobago.

For Orders	From \$0.01 to	\$2.50.....	5 cents.
	From \$2.51 to	\$5.00.....	7 cents.
	From \$5.01 to	\$10.00.....	10 cents.
	From \$10.01 to	\$20.00.....	12 cents.
	From \$20.01 to	\$40.00.....	15 cents.
	From \$40.01 to	\$60.00.....	18 cents.
	From \$60.01 to	\$80.00.....	20 cents.
	From \$80.01 to	\$100.00.....	22 cents.

Memoranda of Issuing Postmaster:

If order is purchased through Rural Carrier, he will fill spaces below:

Carrier's receipt No. -----

-----, Carrier.

NOTE.—The maximum amount for which a single Money Order may be issued is \$100. When a larger sum is to be sent additional Orders must be obtained. Any number of Orders may be drawn on any Money Order office on any one day.

Applications must be preserved at the office of issue for three years from date of issue.



NARCISSUS PAPER WHITE



Paper White Narcissus

Charming - Fragrant - Beautiful

Their charming, fragrant, beautiful white flowers fill your home with delicious perfume at Fall, Winter and Spring.

Make a Handsome Decoration for Your Thanksgiving and Christmas Table; Everybody Can Raise Them

Plant a dozen Bulbs in a shallow bowl, cover with small stones and fill with water. Be sure to place in the dark for 2 weeks to develop the roots and then keep in a moderately temperate room. They require no care, no attention. They will keep on growing and produce a beautiful flowering plant.

Narcissus Paper White Grandiflora Monster Bulbs, 5c each, 50c doz., \$4.00 per 100.

Pebbles for planting Paper White Bulbs, qt., 10c; 4 qts., 35c.

GRAND SOLIEL D'OR. A beautiful variety bearing clusters of golden yellow flowers with orange cups. 15c each, \$1.75 doz.